

HM3160

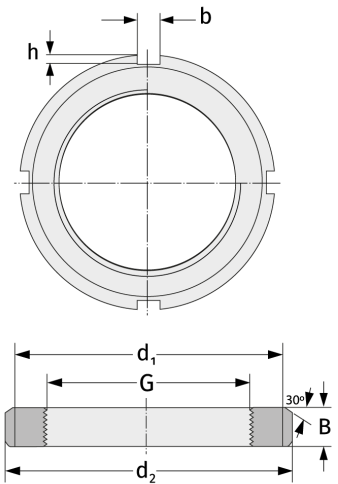
Grooved Nuts



Details:

Main dimensions

Weight [kg]	≈ 11.7	B [mm]	40
G [mm]	Tr300x 4	b [mm]	24
		h [mm]	12
d ₁ [mm]	340		
d ₂ [mm]	380		



Mating dimensions

Containing components

Securing

MS3160