

# QJ1056MPA

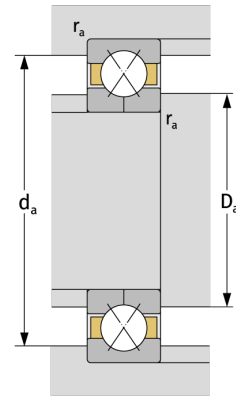
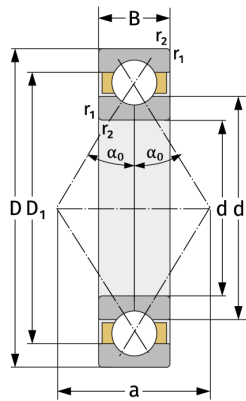
Four Point Contact Ball Bearings (metric)



## Details:

### Main dimensions

d [mm]	280	$D_1$ [mm]	$\approx 370.9$
D [mm]	420	$r_{1,2}$ [mm]	4
B [mm]	65	$\alpha_0$ [°]	35
Weight [kg]	$\approx 34.4$	a [mm]	$\approx 245$
$d_1$ [mm]	$\approx 329.1$		



### Mating dimensions

$d_{a, \min}$ [mm]	294.6
$D_{a, \max}$ [mm]	405.4
$r_{a, \max}$ [mm]	3

### Calculation data

C [kN]	565
$C_0$ [kN]	1080
$C_u$ [kN]	28.7
$n_{th}$ [min <sup>-1</sup> ]	1251
$n_g$ [min <sup>-1</sup> ]	2400