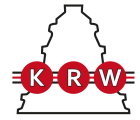


QJ1926MPA

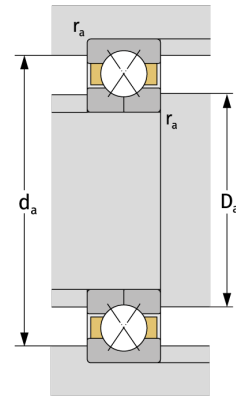
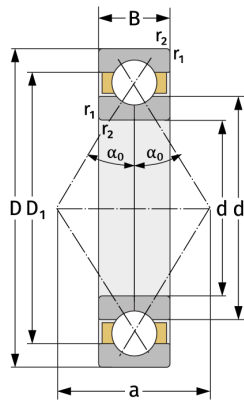
Four Point Contact Ball Bearings (metric)



Details:

Main dimensions

d [mm]	130	D_1 [mm]	≈ 162.7
D [mm]	180	$r_{1,2}$ [mm]	1.5
B [mm]	24	α_0 [°]	35
Weight [kg]	≈ 2	a [mm]	≈ 109
d_1 [mm]	≈ 147.3		



Mating dimensions

$d_{a, \min}$ [mm]	137
$D_{a, \max}$ [mm]	173
$r_{a, \max}$ [mm]	1.5

Calculation data

C [kN]	124
C_0 [kN]	176
C_u [kN]	6.91
n_{th} [min ⁻¹]	2793
n_g [min ⁻¹]	5600