

# QJ1936MPA

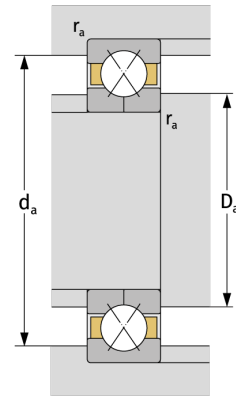
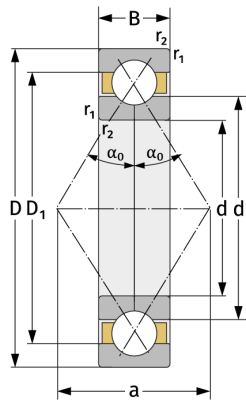
Four Point Contact Ball Bearings (metric)



## Details:

### Main dimensions

d [mm]	180	$D_1$ [mm]	$\approx 225.8$
D [mm]	250	$r_{1,2}$ [mm]	2
B [mm]	33	$\alpha_0$ [°]	35
Weight [kg]	$\approx 5.36$	a [mm]	$\approx 151$
$d_1$ [mm]	$\approx 204.2$		



### Mating dimensions

$d_{a, \min}$ [mm]	188.8
$D_{a, \max}$ [mm]	241.2
$r_{a, \max}$ [mm]	2

### Calculation data

C [kN]	227
$C_0$ [kN]	345
$C_u$ [kN]	11.6
$n_{th}$ [min <sup>-1</sup> ]	2180
$n_g$ [min <sup>-1</sup> ]	4000