

# QJ217MPA

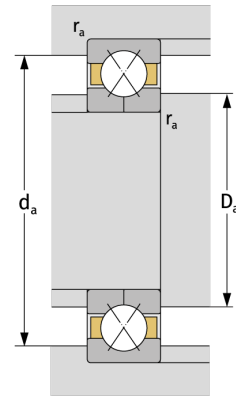
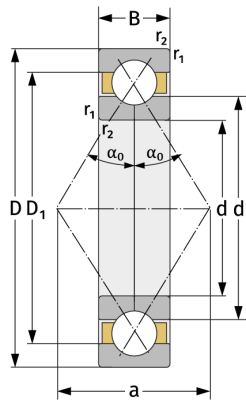
Four Point Contact Ball Bearings (metric)



## Details:

### Main dimensions

d [mm]	85	$D_1$ [mm]	$\approx 127.2$
D [mm]	150	$r_{1,2}$ [mm]	2
B [mm]	28	$\alpha_0$ [°]	35
Weight [kg]	$\approx 2.35$	a [mm]	$\approx 82$
$d_1$ [mm]	$\approx 107.8$		



### Mating dimensions

$d_{a, \min}$ [mm]	96
$D_{a, \max}$ [mm]	139
$r_{a, \max}$ [mm]	2

### Calculation data

C [kN]	150
$C_0$ [kN]	160
$C_u$ [kN]	7.14
$n_{th}$ [min <sup>-1</sup> ]	4057
$n_g$ [min <sup>-1</sup> ]	7400