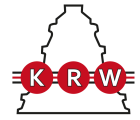


QJ272MPA

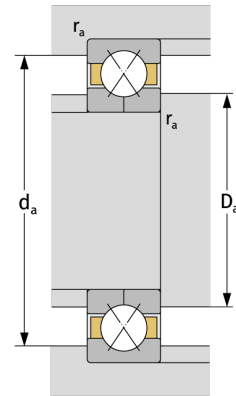
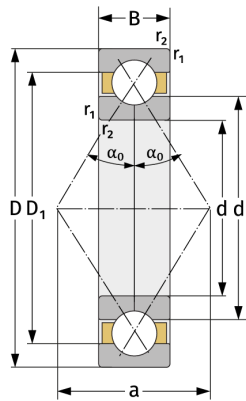
Four Point Contact Ball Bearings (metric)



Details:

Main dimensions

d [mm]	360	D_1 [mm]	≈ 539
D [mm]	650	$r_{1,2}$ [mm]	6
B [mm]	95	α_0 [°]	35
Weight [kg]	≈ 157	a [mm]	≈ 354
d_1 [mm]	≈ 471		



Mating dimensions

$d_{a, \min}$ [mm]	386
$D_{a, \max}$ [mm]	624
$r_{a, \max}$ [mm]	5

Calculation data

C [kN]	1040
C_0 [kN]	2440
C_u [kN]	54.2
n_{th} [min ⁻¹]	741
n_g [min ⁻¹]	1600