

QJ364MPA

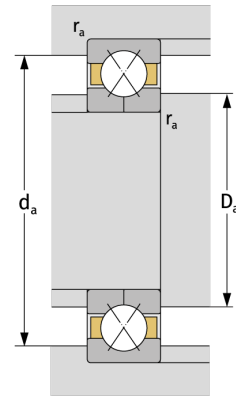
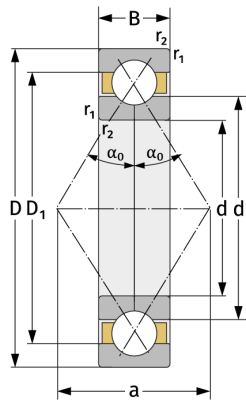
Four Point Contact Ball Bearings (metric)



Details:

Main dimensions

d [mm]	320	D_1 [mm]	≈ 538.3
D [mm]	670	$r_{1,2}$ [mm]	7.5
B [mm]	112	α_0 [°]	35
Weight [kg]	≈ 222	a [mm]	≈ 347
d_1 [mm]	≈ 451.7		



Mating dimensions

$d_{a, \min}$ [mm]	352
$D_{a, \max}$ [mm]	638
$r_{a, \max}$ [mm]	6

Calculation data

C [kN]	1310
C_0 [kN]	2960
C_u [kN]	66.5
n_{th} [min ⁻¹]	662
n_g [min ⁻¹]	1600