

QJ417MPA

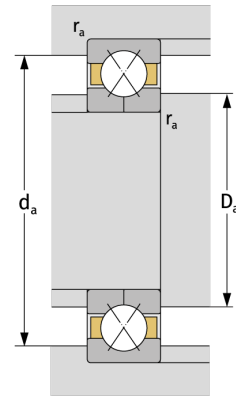
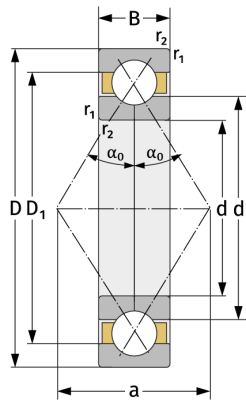
Four Point Contact Ball Bearings (metric)



Details:

Main dimensions

d [mm]	85	D_1 [mm]	≈ 166.8
D [mm]	210	$r_{1,2}$ [mm]	4
B [mm]	52	α_0 [°]	35
Weight [kg]	≈ 10.6	a [mm]	≈ 103
d_1 [mm]	≈ 128.2		



Mating dimensions

$d_{a, \min}$ [mm]	105
$D_{a, \max}$ [mm]	190
$r_{a, \max}$ [mm]	3

Calculation data

C [kN]	332
C_0 [kN]	349
C_u [kN]	14
n_{th} [min ⁻¹]	3095
n_g [min ⁻¹]	5900