

7052MP

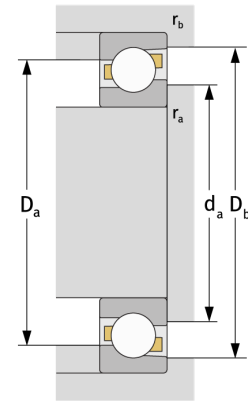
Schrägkugellager (einreihig, metrisch)



Details:

Hauptabmessungen

d [mm]	260	D_1 [mm]	$\approx 349,4$
D [mm]	400	$r_{1,2}$ [mm]	4
B [mm]	65	$r_{3,4}$ [mm]	1,5
Gewicht [kg]	$\approx 28,6$	α_0 [°]	30
d_1 [mm]	$\approx 314,7$	a [mm]	≈ 128



Anschlussmaße		Berechnungsdaten	
$d_{a, \min}$ [mm]	274,6	C [kN]	370
$D_{a, \max}$ [mm]	385,4	C_0 [kN]	565
$D_{b, \max}$ [mm]	393	C_u [kN]	15,5
$r_{a, \max}$ [mm]	3	n_{th} [min ⁻¹]	1643
$r_{b, \max}$ [mm]	1,5	n_g [min ⁻¹]	2000