

7060MP

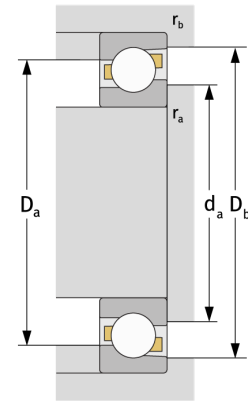
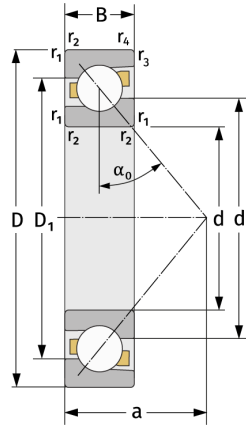
Schrägkugellager (einreihig, metrisch)



Details:

Hauptabmessungen

d [mm]	300	D_1 [mm]	$\approx 401,6$
D [mm]	460	$r_{1,2}$ [mm]	4
B [mm]	74	$r_{3,4}$ [mm]	1,5
Gewicht [kg]	$\approx 42,8$	α_0 [°]	30
d_1 [mm]	≈ 363	a [mm]	≈ 147



Anschlussmaße		Berechnungsdaten	
$d_{a, \min}$ [mm]	314,6	C [kN]	425
$D_{a, \max}$ [mm]	445,4	C_0 [kN]	700
$D_{b, \max}$ [mm]	453	C_u [kN]	17,8
$r_{a, \max}$ [mm]	3	n_{th} [min ⁻¹]	1405
$r_{b, \max}$ [mm]	1,5	n_g [min ⁻¹]	1700