

7076MP

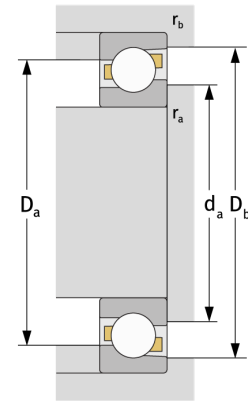
Schrägkugellager (einreihig, metrisch)



Details:

Hauptabmessungen

d [mm]	380	D_1 [mm]	$\approx 494,4$
D [mm]	560	$r_{1,2}$ [mm]	5
B [mm]	82	$r_{3,4}$ [mm]	2
Gewicht [kg]	$\approx 66,2$	α_0 [°]	30
d_1 [mm]	$\approx 450,7$	a [mm]	≈ 177



Anschlussmaße		Berechnungsdaten	
$d_{a, \min}$ [mm]	398	C [kN]	525
$D_{a, \max}$ [mm]	542	C_0 [kN]	990
$D_{b, \max}$ [mm]	551,2	C_u [kN]	22,6
$r_{a, \max}$ [mm]	4	n_{th} [min ⁻¹]	1053
$r_{b, \max}$ [mm]	2	n_g [min ⁻¹]	1300