

# 708/500MP

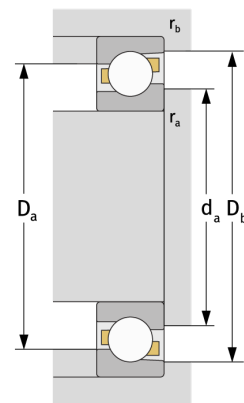
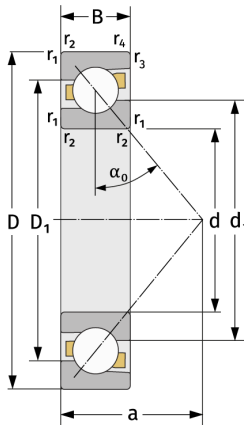
Schrägkugellager (einreihig, metrisch)



## Details:

### Hauptabmessungen

d [mm]	500	$D_1$ [mm]	$\approx 576,2$
D [mm]	620	$r_{1,2}$ [mm]	2,1
B [mm]	37	$r_{3,4}$ [mm]	1,1
Gewicht [kg]	$\approx 25,5$	$\alpha_0$ [°]	30
$d_1$ [mm]	$\approx 546,1$	a [mm]	$\approx 180$



Anschlussmaße		Berechnungsdaten	
$d_{a, \min}$ [mm]	510,2	C [kN]	272
$D_{a, \max}$ [mm]	609,8	$C_0$ [kN]	550
$D_{b, \max}$ [mm]	614	$C_u$ [kN]	11,5
$r_{a, \max}$ [mm]	2,1	$n_{th}$ [min <sup>-1</sup> ]	697
$r_{b, \max}$ [mm]	1	$n_g$ [min <sup>-1</sup> ]	1100