

70872MP

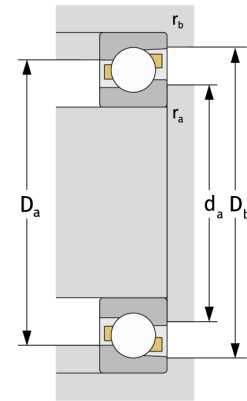
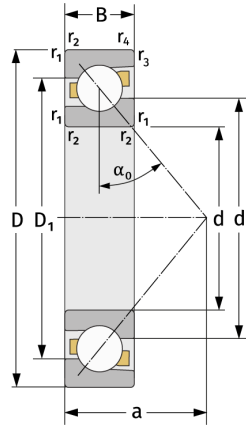
Schrägkugellager (einreihig, metrisch)



Details:

Hauptabmessungen

d [mm]	360	D_1 [mm]	$\approx 410,5$
D [mm]	440	$r_{1,2}$ [mm]	1,5
B [mm]	25	$r_{3,4}$ [mm]	1
Gewicht [kg]	$\approx 8,19$	α_0 [°]	30
d_1 [mm]	≈ 391	a [mm]	≈ 128



Anschlussmaße		Berechnungsdaten	
$d_{a, \min}$ [mm]	367	C [kN]	133
$D_{a, \max}$ [mm]	433	C_0 [kN]	254
$D_{b, \max}$ [mm]	435,4	C_u [kN]	6,3
$r_{a, \max}$ [mm]	1,5	n_{th} [min ⁻¹]	1011
$r_{b, \max}$ [mm]	1	n_g [min ⁻¹]	1600