

7088MP

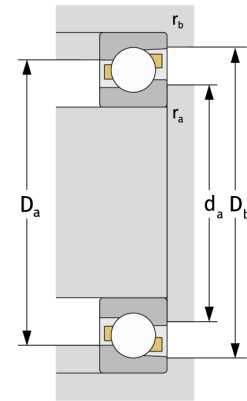
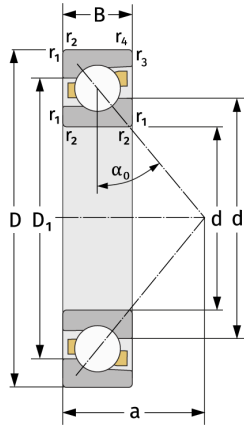
Schrägkugellager (einreihig, metrisch)



Details:

Hauptabmessungen

d [mm]	440	D_1 [mm]	$\approx 573,8$
D [mm]	650	$r_{1,2}$ [mm]	6
B [mm]	94	$r_{3,4}$ [mm]	3
Gewicht [kg]	≈ 103	α_0 [°]	30
d_1 [mm]	$\approx 522,3$	a [mm]	≈ 204



Anschlussmaße		Berechnungsdaten	
$d_{a, \min}$ [mm]	463	C [kN]	665
$D_{a, \max}$ [mm]	627	C_0 [kN]	1370
$D_{b, \max}$ [mm]	637,6	C_u [kN]	28,9
$r_{a, \max}$ [mm]	5	n_{th} [min ⁻¹]	863
$r_{b, \max}$ [mm]	2,5	n_g [min ⁻¹]	1100