

70956MP

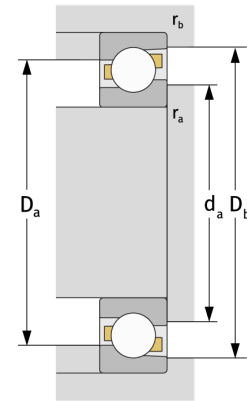
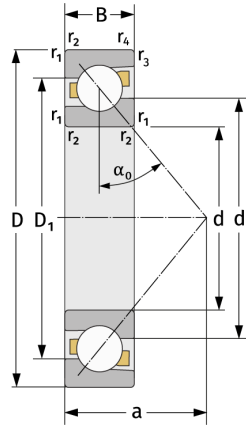
Schrägkugellager (einreihig, metrisch)



Details:

Hauptabmessungen

d [mm]	280	D_1 [mm]	$\approx 343,4$
D [mm]	380	$r_{1,2}$ [mm]	2
B [mm]	31	$r_{3,4}$ [mm]	1
Gewicht [kg]	$\approx 10,5$	α_0 [°]	30
d_1 [mm]	$\approx 318,6$	a [mm]	≈ 111



Anschlussmaße		Berechnungsdaten	
$d_{a, \min}$ [mm]	288,8	C [kN]	177
$D_{a, \max}$ [mm]	371,2	C_0 [kN]	279
$D_{b, \max}$ [mm]	375,4	C_u [kN]	7,67
$r_{a, \max}$ [mm]	2	n_{th} [min ⁻¹]	1384
$r_{b, \max}$ [mm]	1	n_g [min ⁻¹]	2000