

70968MP

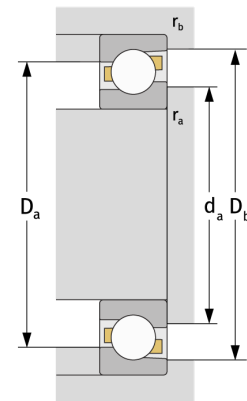
Schrägkugellager (einreihig, metrisch)



Details:

Hauptabmessungen

d [mm]	340	D_1 [mm]	$\approx 416,2$
D [mm]	460	$r_{1,2}$ [mm]	2,1
B [mm]	37	$r_{3,4}$ [mm]	1
Gewicht [kg]	$\approx 18,3$	α_0 [°]	30
d_1 [mm]	$\approx 386,1$	a [mm]	≈ 134



Anschlussmaße		Berechnungsdaten	
$d_{a, \min}$ [mm]	350,2	C [kN]	245
$D_{a, \max}$ [mm]	449,8	C_0 [kN]	411
$D_{b, \max}$ [mm]	455,4	C_u [kN]	10,2
$r_{a, \max}$ [mm]	2,1	n_{th} [min ⁻¹]	1102
$r_{b, \max}$ [mm]	1	n_g [min ⁻¹]	1600