

70976MP

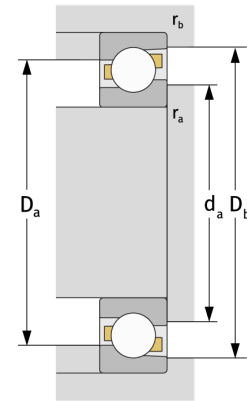
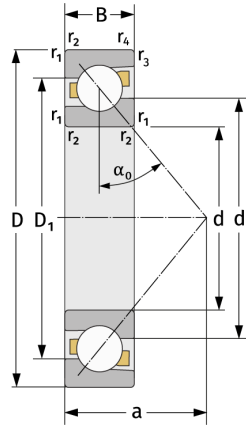
Schrägkugellager (einreihig, metrisch)



Details:

Hauptabmessungen

d [mm]	380	D_1 [mm]	≈ 470
D [mm]	520	$r_{1,2}$ [mm]	3
B [mm]	44	$r_{3,4}$ [mm]	1,1
Gewicht [kg]	≈ 28,4	α_0 [°]	30
d_1 [mm]	≈ 432,9	a [mm]	≈ 152



Anschlussmaße		Berechnungsdaten	
$d_{a, \min}$ [mm]	392,4	C [kN]	316
$D_{a, \max}$ [mm]	507,6	C_0 [kN]	570
$D_{b, \max}$ [mm]	514	C_u [kN]	13,3
$r_{a, \max}$ [mm]	2,5	n_{th} [min ⁻¹]	965
$r_{b, \max}$ [mm]	1	n_g [min ⁻¹]	1400