

70988MP

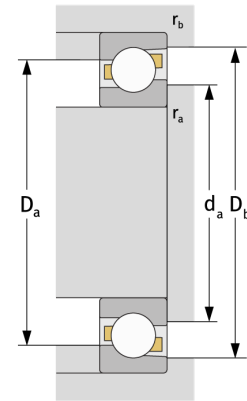
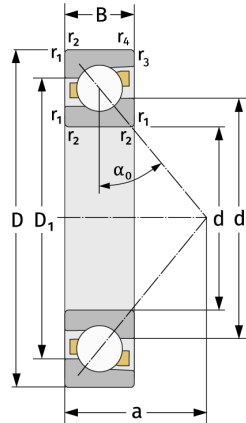
Schrägkugellager (einreihig, metrisch)



Details:

Hauptabmessungen

d [mm]	440	D ₁ [mm]	≈ 543,8
D [mm]	600	r _{1,2} [mm]	4
B [mm]	50	r _{3,4} [mm]	1,5
Gewicht [kg]	≈ 42,7	α ₀ [°]	30
		a [mm]	≈ 175
d ₁ [mm]	≈ 499,6		



Anschlussmaße		Berechnungsdaten	
d _{a, min} [mm]	454,6	C [kN]	400
D _{a, max} [mm]	585,4	C ₀ [kN]	790
D _{b, max} [mm]	593	C _u [kN]	17,1
r _{a, max} [mm]	3	n _{th} [min ⁻¹]	799
r _{b, max} [mm]	1,5	n _g [min ⁻¹]	1200