

70992MP

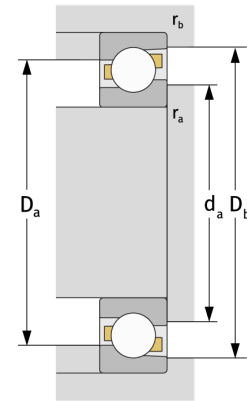
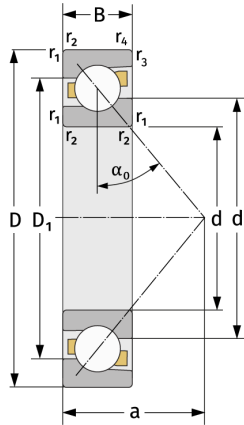
Schrägkugellager (einreihig, metrisch)



Details:

Hauptabmessungen

d [mm]	460	D_1 [mm]	$\approx 563,8$
D [mm]	620	$r_{1,2}$ [mm]	4
B [mm]	50	$r_{3,4}$ [mm]	1,5
Gewicht [kg]	$\approx 44,3$	α_0 [°]	30
d_1 [mm]	$\approx 519,6$	a [mm]	≈ 181



Anschlussmaße		Berechnungsdaten	
$d_{a, \min}$ [mm]	474,6	C [kN]	403
$D_{a, \max}$ [mm]	605,4	C_0 [kN]	810
$D_{b, \max}$ [mm]	613	C_u [kN]	17,2
$r_{a, \max}$ [mm]	3	n_{th} [min ⁻¹]	761
$r_{b, \max}$ [mm]	1,5	n_g [min ⁻¹]	1100