

71872MP

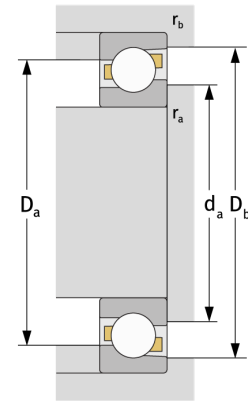
Schrägkugellager (einreihig, metrisch)



Details:

Hauptabmessungen

d [mm]	360	D_1 [mm]	$\approx 415,3$
D [mm]	440	$r_{1,2}$ [mm]	2,1
B [mm]	38	$r_{3,4}$ [mm]	1,1
Gewicht [kg]	$\approx 11,2$	α_0 [°]	30
d_1 [mm]	≈ 387	a [mm]	≈ 134



Anschlussmaße		Berechnungsdaten	
$d_{a, \min}$ [mm]	370,2	C [kN]	228
$D_{a, \max}$ [mm]	429,8	C_0 [kN]	380
$D_{b, \max}$ [mm]	434	C_u [kN]	9,46
$r_{a, \max}$ [mm]	2,1	n_{th} [min ⁻¹]	1134
$r_{b, \max}$ [mm]	1	n_g [min ⁻¹]	1600