

# 71956MP

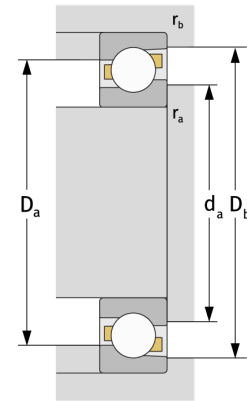
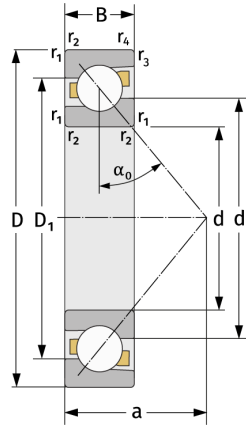
Schrägkugellager (einreihig, metrisch)



## Details:

### Hauptabmessungen

d [mm]	280	$D_1$ [mm]	$\approx 349,1$
D [mm]	380	$r_{1,2}$ [mm]	2,1
B [mm]	46	$r_{3,4}$ [mm]	1,1
Gewicht [kg]	$\approx 14$	$\alpha_0$ [°]	30
$d_1$ [mm]	$\approx 313,7$	a [mm]	$\approx 118$



Anschlussmaße		Berechnungsdaten	
$d_{a, \min}$ [mm]	290,2	C [kN]	264
$D_{a, \max}$ [mm]	369,8	$C_0$ [kN]	401
$D_{b, \max}$ [mm]	374	$C_u$ [kN]	11
$r_{a, \max}$ [mm]	2,1	$n_{th}$ [min <sup>-1</sup> ]	1531
$r_{b, \max}$ [mm]	1	$n_g$ [min <sup>-1</sup> ]	2000