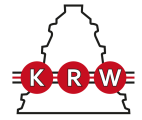


71964MP

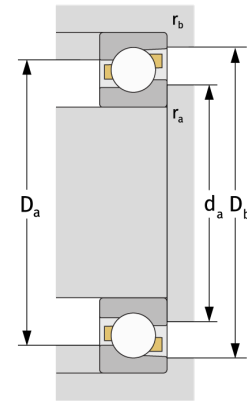
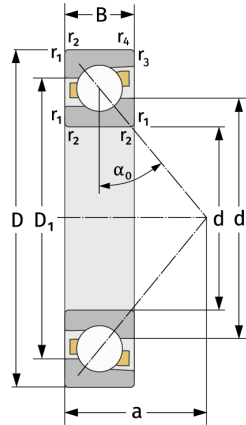
Schrägkugellager (einreihig, metrisch)



Details:

Hauptabmessungen

d [mm]	320	D_1 [mm]	$\approx 402,9$
D [mm]	440	$r_{1,2}$ [mm]	3
B [mm]	56	$r_{3,4}$ [mm]	1,1
Gewicht [kg]	$\approx 23,5$	α_0 [°]	30
d_1 [mm]	$\approx 360,4$	a [mm]	≈ 138



Anschlussmaße		Berechnungsdaten	
$d_{a, \min}$ [mm]	332,4	C [kN]	337
$D_{a, \max}$ [mm]	427,6	C_0 [kN]	560
$D_{b, \max}$ [mm]	434	C_u [kN]	14,3
$r_{a, \max}$ [mm]	2,5	n_{th} [min ⁻¹]	1313
$r_{b, \max}$ [mm]	1	n_g [min ⁻¹]	1700