

71992MP

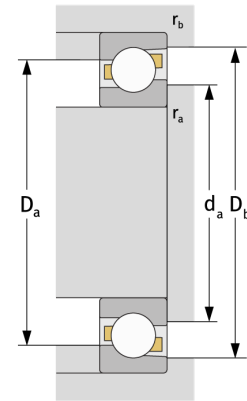
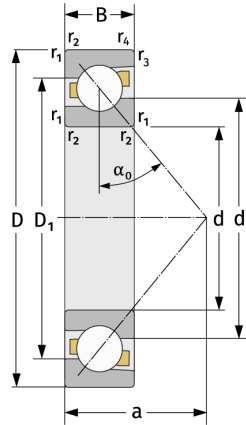
Schrägkugellager (einreihig, metrisch)



Details:

Hauptabmessungen

d [mm]	460	D_1 [mm]	$\approx 570,5$
D [mm]	620	$r_{1,2}$ [mm]	4
B [mm]	74	$r_{3,4}$ [mm]	1,5
Gewicht [kg]	$\approx 59,1$	α_0 [°]	30
d_1 [mm]	$\approx 513,9$	a [mm]	≈ 193



Anschlussmaße		Berechnungsdaten	
$d_{a, \min}$ [mm]	474,6	C [kN]	520
$D_{a, \max}$ [mm]	605,4	C_0 [kN]	1060
$D_{b, \max}$ [mm]	613	C_u [kN]	22,5
$r_{a, \max}$ [mm]	3	n_{th} [min ⁻¹]	846
$r_{b, \max}$ [mm]	1,5	n_g [min ⁻¹]	1100