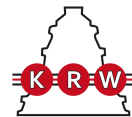


71996MP

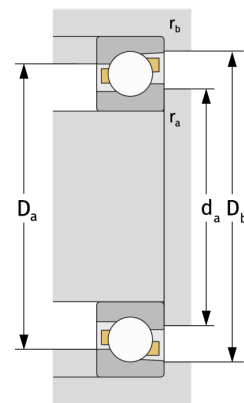
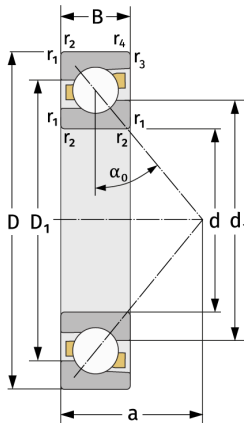
Schrägkugellager (einreihig, metrisch)



Details:

Hauptabmessungen

d [mm]	480	D_1 [mm]	$\approx 597,4$
D [mm]	650	$r_{1,2}$ [mm]	5
B [mm]	78	$r_{3,4}$ [mm]	2
Gewicht [kg]	$\approx 69,2$	α_0 [°]	30
d_1 [mm]	$\approx 537,3$	a [mm]	≈ 202



Anschlussmaße		Berechnungsdaten	
$d_{a, \min}$ [mm]	498	C [kN]	555
$D_{a, \max}$ [mm]	632	C_0 [kN]	1160
$D_{b, \max}$ [mm]	641,2	C_u [kN]	24
$r_{a, \max}$ [mm]	4	n_{th} [min ⁻¹]	804
$r_{b, \max}$ [mm]	2	n_g [min ⁻¹]	1100