

7256B.MP

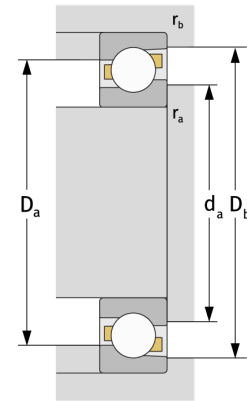
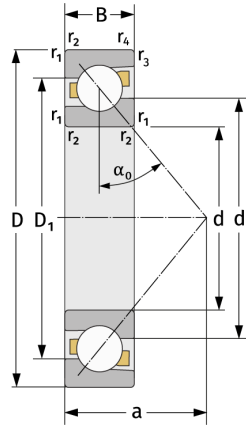
Schrägkugellager (einreihig, metrisch)



Details:

Hauptabmessungen

d [mm]	280	D_1 [mm]	$\approx 418,8$
D [mm]	500	$r_{1,2}$ [mm]	5
B [mm]	80	$r_{3,4}$ [mm]	2
Gewicht [kg]	$\approx 69,3$	α_0 [°]	40
d_1 [mm]	$\approx 367,3$	a [mm]	≈ 204



Anschlussmaße		Berechnungsdaten	
$d_{a, \min}$ [mm]	300	C [kN]	510
$D_{a, \max}$ [mm]	480	C_0 [kN]	830
$D_{b, \max}$ [mm]	489	C_u [kN]	20,9
$r_{a, \max}$ [mm]	4	n_{th} [min ⁻¹]	1343
$r_{b, \max}$ [mm]	2	n_g [min ⁻¹]	1600