

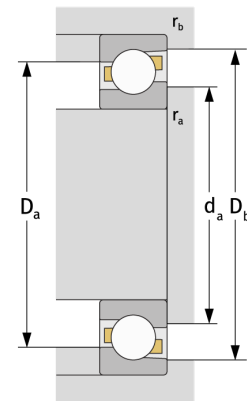
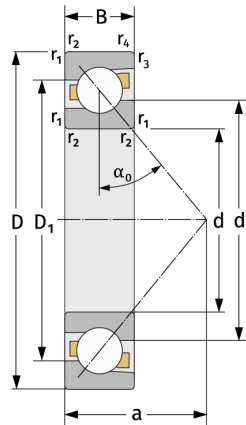
7380B.MP

Schrägkugellager (einreihig, metrisch)



Details:

Hauptabmessungen			
d [mm]	400	D_1 [mm]	$\approx 661,8$
D [mm]	820	$r_{1,2}$ [mm]	7,5
B [mm]	136	$r_{3,4}$ [mm]	4
Gewicht [kg]	≈ 359	α_0 [°]	40
		a [mm]	≈ 324
d_1 [mm]	$\approx 569,2$		



Anschlussmaße		Berechnungsdaten	
$d_{a, \min}$ [mm]	432	C [kN]	1040
$D_{a, \max}$ [mm]	788	C_0 [kN]	2150
$D_{b, \max}$ [mm]	803	C_u [kN]	42,8
$r_{a, \max}$ [mm]	6	n_{th} [min ⁻¹]	671
$r_{b, \max}$ [mm]	3	n_g [min ⁻¹]	940