

7384B.MP

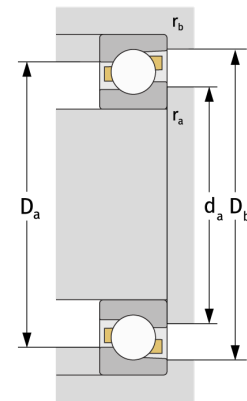
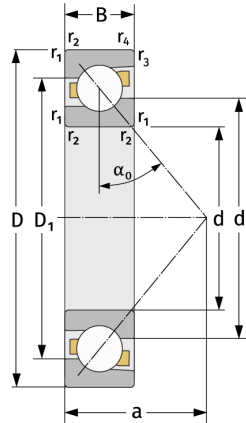
Schrägkugellager (einreihig, metrisch)



Details:

Hauptabmessungen

d [mm]	420	D_1 [mm]	$\approx 686,8$
D [mm]	850	$r_{1,2}$ [mm]	9,5
B [mm]	136	$r_{3,4}$ [mm]	5
Gewicht [kg]	≈ 386	α_0 [°]	40
d_1 [mm]	$\approx 594,2$	a [mm]	≈ 334



Anschlussmaße		Berechnungsdaten	
$d_{a, \min}$ [mm]	460	C [kN]	1090
$D_{a, \max}$ [mm]	810	C_0 [kN]	2320
$D_{b, \max}$ [mm]	830	C_u [kN]	45,3
$r_{a, \max}$ [mm]	8	n_{th} [min ⁻¹]	626
$r_{b, \max}$ [mm]	4	n_g [min ⁻¹]	900