

7396B.MP

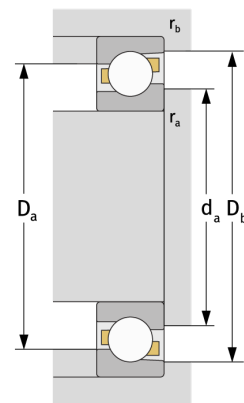
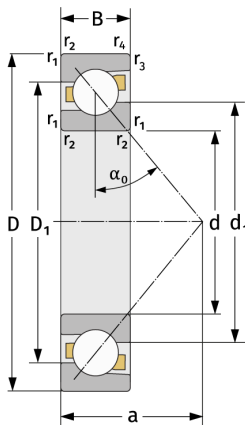
Schrägkugellager (einreihig, metrisch)



Details:

Hauptabmessungen

d [mm]	480	D ₁ [mm]	≈ 791,1
D [mm]	980	r _{1,2} [mm]	9,5
B [mm]	160	r _{3,4} [mm]	5
Gewicht [kg]	≈ 607	α ₀ [°]	40
		a [mm]	≈ 386
d ₁ [mm]	≈ 681,8		



Anschlussmaße		Berechnungsdaten	
d _{a, min} [mm]	520	C [kN]	1380
D _{a, max} [mm]	940	C ₀ [kN]	3220
D _{b, max} [mm]	960	C _u [kN]	58,3
r _{a, max} [mm]	8	n _{th} [min ⁻¹]	520
r _{b, max} [mm]	4	n _g [min ⁻¹]	750