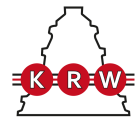


# AH39/1060G

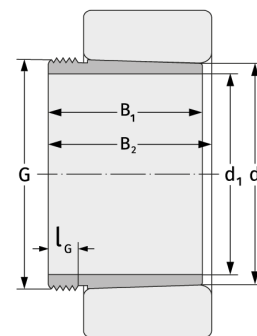
Abziehhülsen



## Details:

### Hauptabmessungen

d [mm]	1060	B <sub>1</sub> [mm]	310
Gewicht [kg]	≈ 312	l <sub>G1</sub> [mm]	50
d <sub>1</sub> [mm]	1000	G [mm]	Tr1120
			x8



### Anschlussmaße

### Berechnungsdaten