

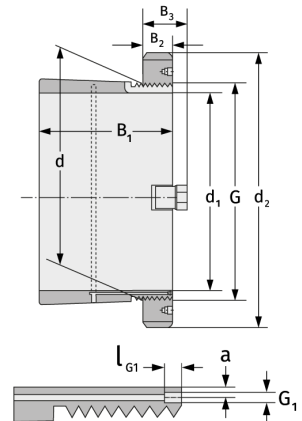
# H240/1000

Spannhülsen



## Details:

Hauptabmessungen			
d [mm]	1000	B <sub>3</sub> [mm]	125
Gewicht [kg]	≈ 539	G [mm]	Tr1000 x8
d <sub>1</sub> [mm]	950	G <sub>1</sub> [mm]	G1/8
d <sub>2</sub> [mm]	1140	l <sub>G1</sub> [mm]	12
B <sub>1</sub> [mm]	562	a [mm]	10
B <sub>2</sub> [mm]	100		



Anschlussmaße	Enthaltene Komponenten	
	Nut-/Wellenmutter	HM30/100 0
	Sicherung	MS30/100 0