

H240/630

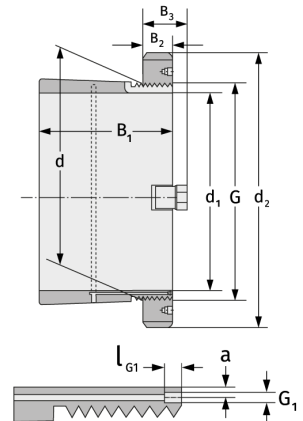
Spannhülsen



Details:

Hauptabmessungen

d [mm]	630	B ₃ [mm]	97
Gewicht [kg]	≈ 157	G [mm]	Tr630x6
d ₁ [mm]	600	G ₁ [mm]	M8
d ₂ [mm]	730	l _{G1} [mm]	12
B ₁ [mm]	395	a [mm]	6
B ₂ [mm]	75		



Anschlussmaße

Enthaltene Komponenten

Nut-/Wellenmutter	HM30/630
Sicherung	MS30/630