

H240/850

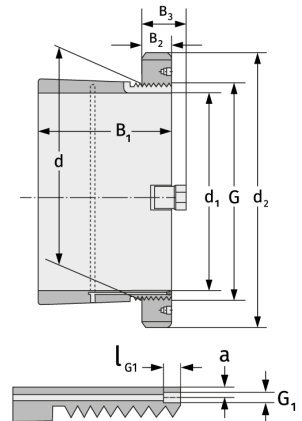
Spannhülsen



Details:

Hauptabmessungen

d [mm]	850	B ₃ [mm]	115
Gewicht [kg]	≈ 393	G [mm]	Tr850x7
d ₁ [mm]	800	G ₁ [mm]	G1/8
d ₂ [mm]	980	l _{G1} [mm]	12
B ₁ [mm]	495	a [mm]	10
B ₂ [mm]	90		



Anschlussmaße

Enthaltene Komponenten

Nut-/Wellenmutter	HM30/850
Sicherung	MS30/850