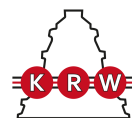


H24032

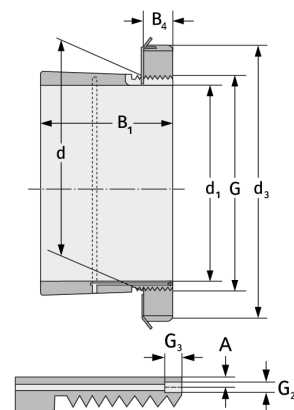
Spannhülsen



Details:

Hauptabmessungen

d [mm]	160	B ₂ [mm]	28
Gewicht [kg]	≈ 6,27	G [mm]	M160x3
d ₁ [mm]	140	G ₁ [mm]	M6
d ₂ [mm]	190	l _{G1} [mm]	7
B ₁ [mm]	118	a [mm]	4,2



Anschlussmaße

Enthaltene Komponenten

Nut-/Wellenmutter	KML32
Sicherung	MBL32