

# H24040

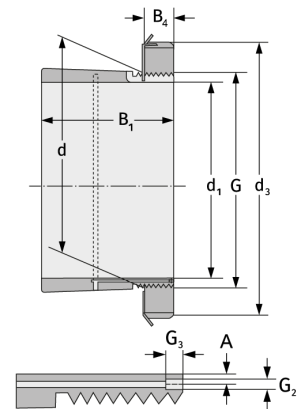
Spannhülsen



## Details:

### Hauptabmessungen

d [mm]	200	B <sub>2</sub> [mm]	32
Gewicht [kg]	≈ 10,9	G [mm]	M200x 3
d <sub>1</sub> [mm]	180	G <sub>1</sub> [mm]	M6
d <sub>2</sub> [mm]	240	l <sub>G1</sub> [mm]	7
B <sub>1</sub> [mm]	153	a [mm]	4,2



### Anschlussmaße

### Enthaltene Komponenten

Nut-/Wellenmutter

KML40

Sicherung

MBL40