

# H241/1000

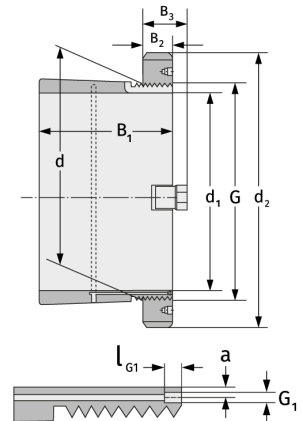
Spannhülsen



## Details:

### Hauptabmessungen

d [mm]	1000	B <sub>3</sub> [mm]	154
Gewicht [kg]	≈ 886	G [mm]	Tr1000 x8
d <sub>1</sub> [mm]	950	G <sub>1</sub> [mm]	G1/8
d <sub>2</sub> [mm]	1240	l <sub>G1</sub> [mm]	12
B <sub>1</sub> [mm]	755	a [mm]	10
B <sub>2</sub> [mm]	125		



### Anschlussmaße

### Enthaltene Komponenten

Nut-/Wellenmutter	HM31/100 0
Sicherung	MS31/100 0