

H241/800

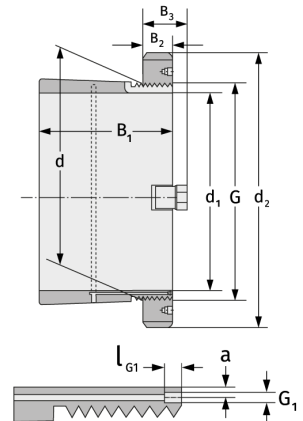
Spannhülsen



Details:

Hauptabmessungen

d [mm]	800	B ₃ [mm]	141
Gewicht [kg]	≈ 552	G [mm]	Tr800x7
d ₁ [mm]	750	G ₁ [mm]	G1/8
d ₂ [mm]	1000	l _{G1} [mm]	12
B ₁ [mm]	627	a [mm]	10
B ₂ [mm]	112		



Anschlussmaße

Enthaltene Komponenten

Nut-/Wellenmutter	HM31/800
Sicherung	MS31/750