

H241/850

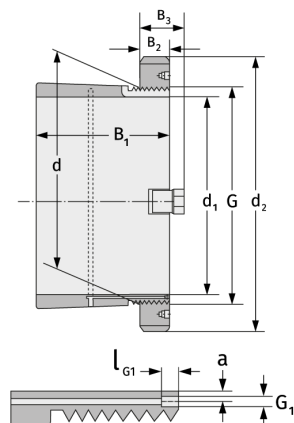
Spannhülsen



Details:

Hauptabmessungen

d [mm]	850	B ₃ [mm]	147
Gewicht [kg]	≈ 650,2	G [mm]	Tr850x7
d ₁ [mm]	800	G ₁ [mm]	G1/8
d ₂ [mm]	1060	l _{G1} [mm]	12
B ₁ [mm]	658	a [mm]	10
B ₂ [mm]	118		



Anschlussmaße

Enthaltene Komponenten

Nut-/Wellenmutter	HM31/850
Sicherung	MS31/850