

# H24136

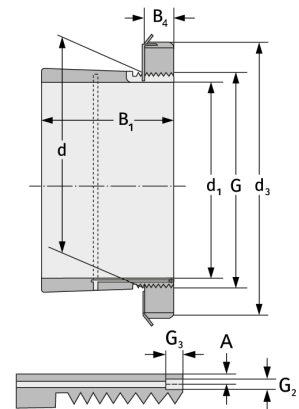
Spannhülsen



## Details:

### Hauptabmessungen

d [mm]	180	B <sub>2</sub> [mm]	30
Gewicht [kg]	≈ 10,5	G [mm]	M180x 3
d <sub>1</sub> [mm]	160	G <sub>1</sub> [mm]	M6
d <sub>2</sub> [mm]	230	l <sub>G1</sub> [mm]	7
B <sub>1</sub> [mm]	159	a [mm]	4,2



### Anschlussmaße

### Enthaltene Komponenten

Nut-/Wellenmutter

KM36

Sicherung

MB36