

H24180

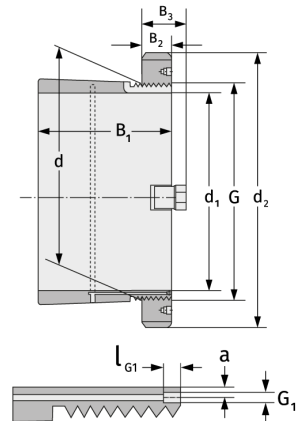
Spannhülsen



Details:

Hauptabmessungen

d [mm]	400	B ₃ [mm]	82
Gewicht [kg]	≈ 73,8	G [mm]	Tr400x 5
d ₁ [mm]	380	G ₁ [mm]	M6
d ₂ [mm]	520	l _{G1} [mm]	7
B ₁ [mm]	332	a [mm]	3,5
B ₂ [mm]	62		



Anschlussmaße

Enthaltene Komponenten

Nut-/Wellenmutter	HM3180
Sicherung	MS3180