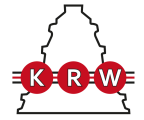


H30/1500

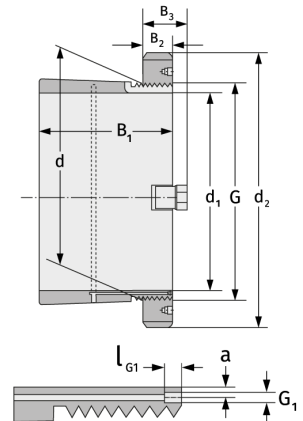
Spannhülsen



Details:

Hauptabmessungen

d [mm]	1500	B ₃ [mm]	135
Gewicht [kg]	≈ 1530	G [mm]	Tr1500 x8
d ₁ [mm]	1400	G ₁ [mm]	G1/4
d ₂ [mm]	1650	l _{G1} [mm]	15
B ₁ [mm]	600	a [mm]	15
B ₂ [mm]	110		



Anschlussmaße

Enthaltene Komponenten

Nut-/Wellenmutter	HM30/150 0
Sicherung	MS30/150 0