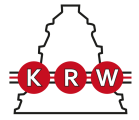


H30/530

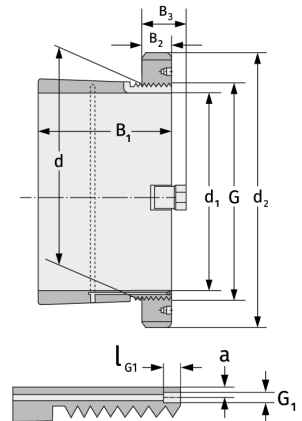
Spannhülsen



Details:

Hauptabmessungen

d [mm]	530	B ₃ [mm]	90
Gewicht [kg]	≈ 100	G [mm]	Tr530x6
d ₁ [mm]	500	G ₁ [mm]	M8
d ₂ [mm]	630	l _{G1} [mm]	12
B ₁ [mm]	265	a [mm]	6
B ₂ [mm]	68		



Anschlussmaße

Enthaltene Komponenten

Nut-/Wellenmutter	HM30/530
Sicherung	MS30/530