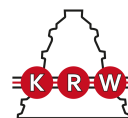


H30/560

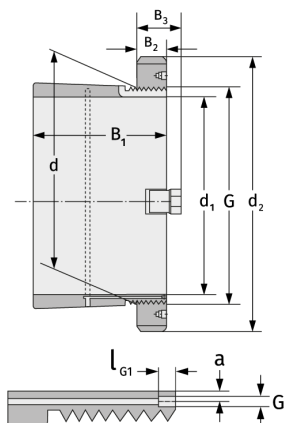
Spannhülsen



Details:

Hauptabmessungen

d [mm]	560	B ₃ [mm]	97
Gewicht [kg]	≈ 110	G [mm]	Tr560x6
d ₁ [mm]	530	G ₁ [mm]	M8
d ₂ [mm]	650	l _{G1} [mm]	12
B ₁ [mm]	282	a [mm]	6
B ₂ [mm]	75		



Anschlussmaße

Enthaltene Komponenten

Nut-/Wellenmutter	HM30/560
Sicherung	MS30/560