

H30/900

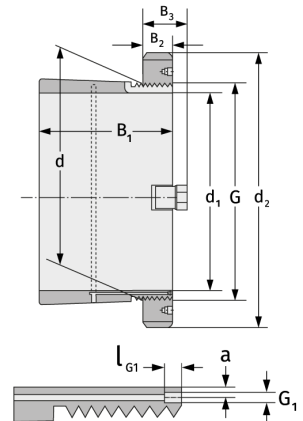
Spannhülsen



Details:

Hauptabmessungen

d [mm]	900	B ₃ [mm]	125
Gewicht [kg]	≈ 387	G [mm]	Tr900x7
d ₁ [mm]	850	G ₁ [mm]	G1/8
d ₂ [mm]	1030	l _{G1} [mm]	12
B ₁ [mm]	400	a [mm]	10
B ₂ [mm]	100		



Anschlussmaße

Enthaltene Komponenten

Nut-/Wellenmutter	HM30/900
Sicherung	MS30/850