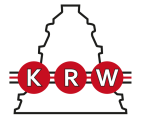


H3080

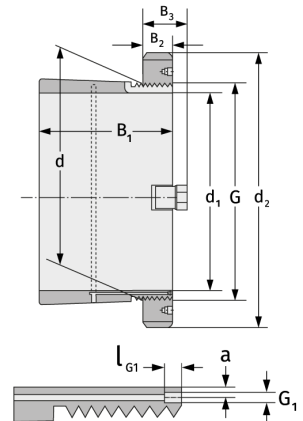
Spannhülsen



Details:

Hauptabmessungen

d [mm]	400	B ₃ [mm]	66
Gewicht [kg]	≈ 41,3	G [mm]	Tr400x 5
d ₁ [mm]	380	G ₁ [mm]	M6
d ₂ [mm]	470	l _{G1} [mm]	7
B ₁ [mm]	210	a [mm]	3,5
B ₂ [mm]	52		



Anschlussmaße

Enthaltene Komponenten

Nut-/Wellenmutter	HM3080
Sicherung	MS3076