

H31/1000

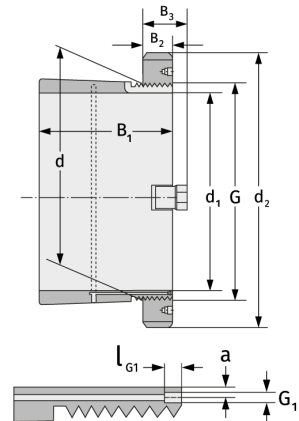
Spannhülsen



Details:

Hauptabmessungen

d [mm]	1000	B ₃ [mm]	154
Gewicht [kg]	≈ 842	G [mm]	Tr1000 x8
d ₁ [mm]	950	G ₁ [mm]	G1/8
d ₂ [mm]	1240	l _{G1} [mm]	12
B ₁ [mm]	609	a [mm]	10
B ₂ [mm]	125		



Anschlussmaße

Enthaltene Komponenten

Nut-/Wellenmutter	HM31/100 0
Sicherung	MS31/100 0