

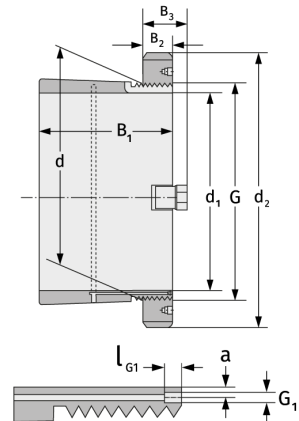
# H31/1250

Spannhülsen



## Details:

Hauptabmessungen			
d [mm]	1250	B <sub>3</sub> [mm]	154
Gewicht [kg]	≈ 1345	G [mm]	Tr1250 x8
d <sub>1</sub> [mm]	1180	G <sub>1</sub> [mm]	G1/4
d <sub>2</sub> [mm]	1490	l <sub>G1</sub> [mm]	15
B <sub>1</sub> [mm]	677	a [mm]	14
B <sub>2</sub> [mm]	125		



Anschlussmaße	Enthaltene Komponenten	
	Nut-/Wellenmutter	HM31/125 0
	Sicherung	MS31/100 0