

H31/1500

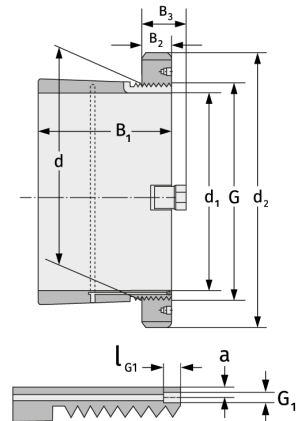
Spannhülsen



Details:

Hauptabmessungen

d [mm]	1500	B ₃ [mm]	159
Gewicht [kg]	≈ 2170	G [mm]	Tr1500 x8
d ₁ [mm]	1400	G ₁ [mm]	G1/4
d ₂ [mm]	1740	l _{G1} [mm]	15
B ₁ [mm]	755	a [mm]	15
B ₂ [mm]	130		



Anschlussmaße

Enthaltene Komponenten

Nut-/Wellenmutter	HM31/150 0
Sicherung	MS31/100 0