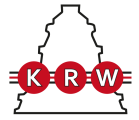


# H31/630

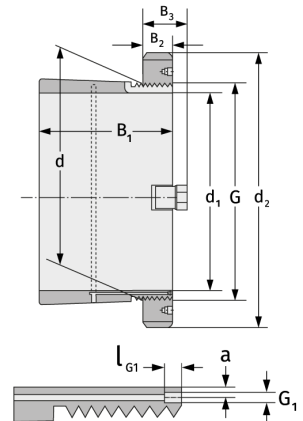
Spannhülsen



## Details:

### Hauptabmessungen

d [mm]	630	B <sub>3</sub> [mm]	120
Gewicht [kg]	≈ 252	G [mm]	Tr630x6
d <sub>1</sub> [mm]	600	G <sub>1</sub> [mm]	M8
d <sub>2</sub> [mm]	800	l <sub>G1</sub> [mm]	12
B <sub>1</sub> [mm]	424	a [mm]	6
B <sub>2</sub> [mm]	95		



### Anschlussmaße

### Enthaltene Komponenten

Nut-/Wellenmutter	HM31/630
Sicherung	MS31/630