

H31/710

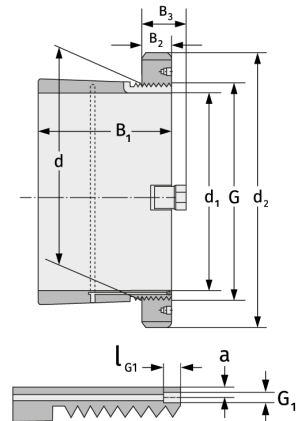
Spannhülsen



Details:

Hauptabmessungen

d [mm]	710	B ₃ [mm]	135
Gewicht [kg]	≈ 378	G [mm]	Tr710x7
d ₁ [mm]	670	G ₁ [mm]	G1/8
d ₂ [mm]	900	l _{G1} [mm]	12
B ₁ [mm]	467	a [mm]	8
B ₂ [mm]	106		



Anschlussmaße

Enthaltene Komponenten

Nut-/Wellenmutter	HM31/710
Sicherung	MS31/710