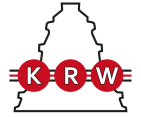


# H3152X

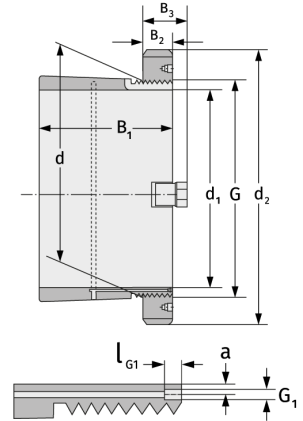
Spannhülsen



## Details:

### Hauptabmessungen

d [mm]	260	B <sub>2</sub> [mm]	39
Gewicht [kg]	≈ 22	G [mm]	Tr260x 4
d <sub>1</sub> [mm]	240	G <sub>1</sub> [mm]	M6
d <sub>2</sub> [mm]	330	l <sub>G1</sub> [mm]	7
B <sub>1</sub> [mm]	190	a [mm]	4,2



### Anschlussmaße

### Enthaltene Komponenten

Nut-/Wellenmutter

HM52T

Sicherung

MB52